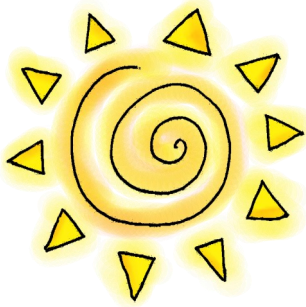




## Summer 2020

### Greetings from All of Us at Child Care Resource Network!



We hope this finds everyone in our early learning community well and healthy and taking time to enjoy the summer, to relax and replenish in this challenging time.

At Child Care Resource Network we are continuing to work remotely, doing our utmost to maintain all our services to the greatest extent possible. We check emails and voice mails frequently. Please reach out with any questions, concerns, or requests for assistance.

At CCRN, our priority is to support you with the most current and accurate information and to offer any assistance we can to help your business survive and thrive in this difficult time. We are sending out weekly updates to keep you informed on COVID-19 guidance from the Early Learning Division, resources, training opportunities, or any other information that may be helpful.

We look forward to the day when we can be together and see each other face to face. Since that is not possible for now, all CCRN trainings are being held online throughout the summer. Take a look at the training calendar for some great online options offered locally, across the state and nationally.

All of us at CCRN miss connecting with you in person!

*Cande, Devon, Jill, Katrina, Lorena, Martha, Mary, Molly*



***To plant a garden is to believe in tomorrow ~ Audrey Hepburn***

## Please post newsletter and training calendar!

Child Care Resource Network wants to reach **EVERYONE** in our early childhood community!

To receive the newsletter, training calendar, and helpful articles by email contact CCRN at [CCRN@soesd.k12.or.us](mailto:CCRN@soesd.k12.or.us) or call (541) 776-8590 x 1126 to be added to our distribution list.

*Be sure to add CCRN's email to your contacts!*

**We want to stay in touch!**

## Summer 2020

<i>Inside this issue</i>	<i>Page</i>
Spark Programs	2
Conversations with ELD	2
Phase 2 Emergency Child Care Grant	3
Thinking About Equity and Racism	4
Video on Breathing to Calm Down	5
Kindness Curriculum	5
Fun with Shaving Cream	

## Spark Update

### *Not participating in Spark yet? This might be the perfect time!*

Although CCRN staff are continuing to work remotely and all trainings are being held online, CCRN is still ready and able to assist and support providers. Our message to programs that are not participating in Spark, or that started and got sidetracked, is that now is the time to reach out and re-engage. We are here to help, and this might be the perfect moment to finish your portfolio or pick up where you left off. For more information about Spark and about Focused Child Care Networks, contact Devon Finley by email or phone at [CCRN@soesd.k12.or.us](mailto:CCRN@soesd.k12.or.us) or 541-944-5207.

Spark participation has many benefits, including support and incentive funds, and for programs serving DHS families, higher reimbursements for programs and lower co-pay for families - a win-win!

## Conversations with the Early Learning Division



Oregon child care providers are invited to connect with the ELD in a series of virtual conversations. In July these conversations will focus on gathering feedback on the Emergency Child Care guidance being developed for fall, with the final guidance to be released by August 14, 2020.

Separate meetings for providers are based on type of care and there is also a meeting held in Spanish on Saturdays. These meetings are a chance to ask questions (via chat), get information, give suggestions, and share concerns with those in charge at ELD and Office of Child Care.

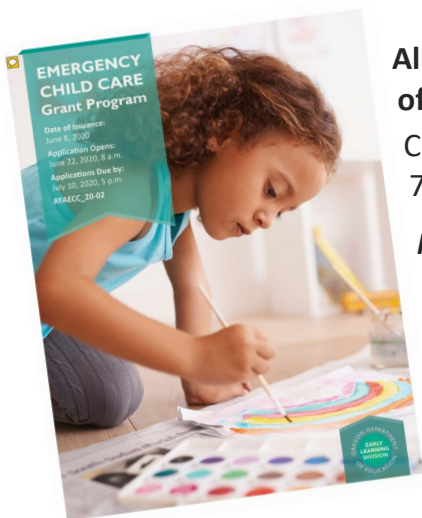
Details and meeting links will be coming soon from ELD and will be included in CCRN's weekly updates.

July 7-11, 2020:	Small group input sessions
July 28-August 1, 2020:	Review guidance proposal
Tuesday:	Registered Family
Wednesday:	Certified Family
Thursday:	Certified Centers
Saturday:	Spanish Language (All Types)



To receive the latest news from ELD register for updates at <https://oregonearlylearning.com/>, and also visit the ELD's COVID-19 webpage where Frequently Asked Questions about emergency child care are updated regularly, <https://oregonearlylearning.com/COVID-19-Resources>.

# Emergency Child Care Grant Phase 2 - Apply NOW



**All providers who plan to be open by September 1, 2020, should take advantage of ELD Phase 2 Grant funds. The grant application period closes July 10<sup>th</sup>.**

Contact CCRN with questions or for assistance, [ccrn@soesd.k12.or.us](mailto:ccrn@soesd.k12.or.us) / 541-301-7760, English / 541-810-3424, Spanish

**Note:** Providers approved for Phase 1 grant funds are not eligible to receive a Phase 2 grant for the same location.

**To be eligible for Phase 2 Grant, applicants must meet the following criteria:**

*Certified Center, Certified Family, and Registered Family Licensed Providers:*

◆ Must have **applied to be an Emergency Child Care (ECC) Facility by June 30, 2020**. Any program that has **not applied** to be an Emergency

Child Care (ECC) Facility but plans to be **open in September** should apply to be an **ECC Provider NOW** to be **eligible for Phase 2 Grant funds**.

\* ECC applications can be found at <https://oregonearlylearning.com/COVID-19-Resources/Emergency-Child-Care> or contact CCRN for assistance, [ccrn@soesd.k12.or.us](mailto:ccrn@soesd.k12.or.us) / 541-301-7760 / 541-810-3424, Spanish

- ◆ Commit to adhering to health and safety guidelines
- ◆ If currently open, agree to remain open and serve children through the end of September 2020
- ◆ If currently closed, agree to reopen by September 1, 2020 and remain open and serve children through the end of September 2020

*For License Exempt Providers:*

- ◆ Is a Family, Friend & Neighbor provider (Regulated Subsidy or Relative Care) receiving child care payments through the Department of Human Services
- ◆ Is currently open and caring for a child of an essential worker
- ◆ Agrees to remain open and serve children through the end of September 2020

◆ **Estimated Grant Award Amounts:**

Regulated Subsidy and ERDC Relative Care	<b>\$702</b>
Registered Family	<b>\$2246</b>
Certified Family	<b>\$4212</b>
Certified Center	<b>\$4680 per classroom (limited to three)</b>

- ◆ Phase 2 Grant applications and information on the DUNS number and the online application process can be found at: <https://oregonearlylearning.com/COVID-19-Resources/Grants> - contact CCRN for assistance, [ccrn@soesd.k12.or.us](mailto:ccrn@soesd.k12.or.us) / 541-301-7760 / 541-810-3424, Spanish

- ◆ Click the link below to watch an ELD webinar with information on applying for the grant:

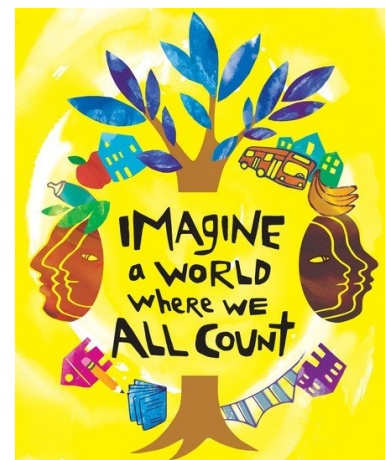
- \* [Request for Applications \(RFA\) Phase 2 Overview Webinar \(English\) – Recorded June 19, 2020](#)
- \* [Request for Application \(RFA\) Phase 2 Overview Webinar \(Spanish\) – Recorded June 20, 2020](#)



## Thinking About Equity, Racism, and Our Responsibility to Children

The tragic events of the past weeks have prompted reflections on the powerful role early educators play in the development of young children's attitudes and understanding of race and racism.

If we are to do our part to create a just and equitable society in which all children and people can thrive it is crucial that all of us, as early educators, engage with this issue personally and in our work with young children.



- ◆ This month **Miriam Calderon, Early Learning System Director**, shared these thoughts on our work as early educators:
 

“the way children learn about racial identity is a ‘hidden curriculum on race.’ Our work is about finding ways to make this visible – in standards for programs and children’s learning, in curriculum, and in the resources we provide to programs. We all have a role to play in doing a much better job of supporting positive racial identity development in young children, and interrupting early childhood practices that send a message to young children that who they are in their own skin, the language they speak, and their lived experiences is not valued in our society. How might we create the kind of change that allows all of our young children to begin kindergarten believing they had a voice and ideas that were respected and acknowledged?...”
- ◆ Zero to Three resource, *Racism and Violence: Using Your Power as a Parent to Support Children Aged Two to Five*, <https://www.zerotothree.org/resources/1598-racism-and-violence-using-your-power-as-a-parent-to-support-children-aged-two-to-five>—this is a great resource for teachers and parents.
- ◆ *Stages of Children’s Racial Identity Development* by Louise Derman-Sparks  
<https://www.earlychildhoodwebinars.com/wp-content/uploads/2016/02/Stages-of-Childrens-Racial-Identity-Development.pdf>
  - The truth is that **By 2** children begin absorbing socially prevailing stereotypes, attitudes and biases about themselves and others. They may begin to show discomfort toward a person with a different skin color.
  - **By 4** children seek labels for racial/ethnic identity. Adult verbal and non-verbal responses greatly influence these beliefs.
  - **By 5** children begin to explore what it means to be from one race compared to another. They are taking cues from what the socioeconomic make-up of groups and institutions tells them about who makes decisions and who has access to resources.
- ◆ Message from NAEYC: *We Stand Together*, <https://www.naeyc.org/resources/blog/message-from-naeyc>
- ◆ Exchange Magazine offers free access to an article by Kelly Matthews and Ijumaa Jordan: "[Our Children, Our Workforce: Why We Must Talk About Race and Racism in Early Childhood Education](#)," which takes a clear look at racism in ECE and suggest concrete actions we can take
- ◆ [Ask a Psychologist: Teacher Mindset Matters When It Comes to Racial Inequity](#) ~ Angela Duckworth
- ◆ [Ask a Psychologist: What Teachers Should Know About Implicit Bias](#) ~ Angela Duckworth
- ◆ Child Care Aware webinar, [Racial Justice, Equity, and the Role of Child Care](#)

## Resources

### Video “Just Breathe” Helps Kids Deal With Their Emotions

In the 4-minute long video, boys and girls describe how their emotions affect them. Rather than just sharing the children’s feelings, the film shows how breathing and mindfulness can help keep kids emotionally healthy. One girl reports that after breathing to calm down, “all the sparkles are at the bottom of your brain.”

Watch it here, [Short film-Just Breathe](#)



### Center for **healthy**minds The Kindness Curriculum

UNIVERSITY OF WISCONSIN-MADISON

Sign up for a free copy, in English or Spanish, of The Kindness Curriculum, a mindfulness approach for preschoolers to help them pay closer attention to their emotions and strengthen social competence.

<https://centerhealthyminds.org/join-the-movement/sign-up-to-receive-the-kindness-curriculum>

### The Art of Shaving Cream

Most early childhood programs love sensory and art experiences with shaving cream! Check out these suggestions from the Portland Children’s Museum for how to use this favorite material in ways you may not have tried before. Find directions for [Painting with Shaving Cream](#) and take a look at more foamy ideas with [10 Shaving Cream Activities](#).



### Child Care Resource Network

Email: [cccrn@soesd.k12.or.us](mailto:cccrn@soesd.k12.or.us) / 541-776-8590 x 1126

#### Molly Clement

Warm Line Inclusion Specialist

[molly\\_clement@soesd.k12.or.us](mailto:molly_clement@soesd.k12.or.us) / 541-324-7720

#### Devon Finley

Child Care Provider Consultant/QI Specialist/Grant Coordinator

[devon\\_finley@soesd.k12.or.us](mailto:devon_finley@soesd.k12.or.us) / 541-776-8590 x 1118

#### Martha Ibarra

Preschool Promise Coordinator/QI Specialist - English, Spanish

[martha\\_ibarra@soesd.k12.or.us](mailto:martha_ibarra@soesd.k12.or.us) / 541-776-8590 x 1122

#### Lorena Juarez

Child Care Specialist/QI Specialist - English, Spanish

[lorena\\_juarez@soesd.k12.or.us](mailto:lorena_juarez@soesd.k12.or.us) / 541-776-8590 x 1119

#### Katrina McGrath

Administrative Assistant III

[katrina\\_mcgrath@soesd.k12.or.us](mailto:katrina_mcgrath@soesd.k12.or.us) / 541-776-8590 x 1126

#### Jill Ramirez

QI Specialist/Focused Child Care Network- English, Spanish

[jill\\_ramirez@soesd.k12.or.us](mailto:jill_ramirez@soesd.k12.or.us) / 541-776-8590 x 1124

#### Candelaria Romero

Infant-Toddler Specialist/Focused Child Car Network-Eng. Sp.

[candelaria\\_romero@soesd.k12.or.us](mailto:candelaria_romero@soesd.k12.or.us) / 541-324-3281

#### Mary Wolf

Child Care Resource Network Manager

[mary\\_wolf@soesd.k12.or.us](mailto:mary_wolf@soesd.k12.or.us) / 541-776-8590 x 1110