



# CHILD CARE

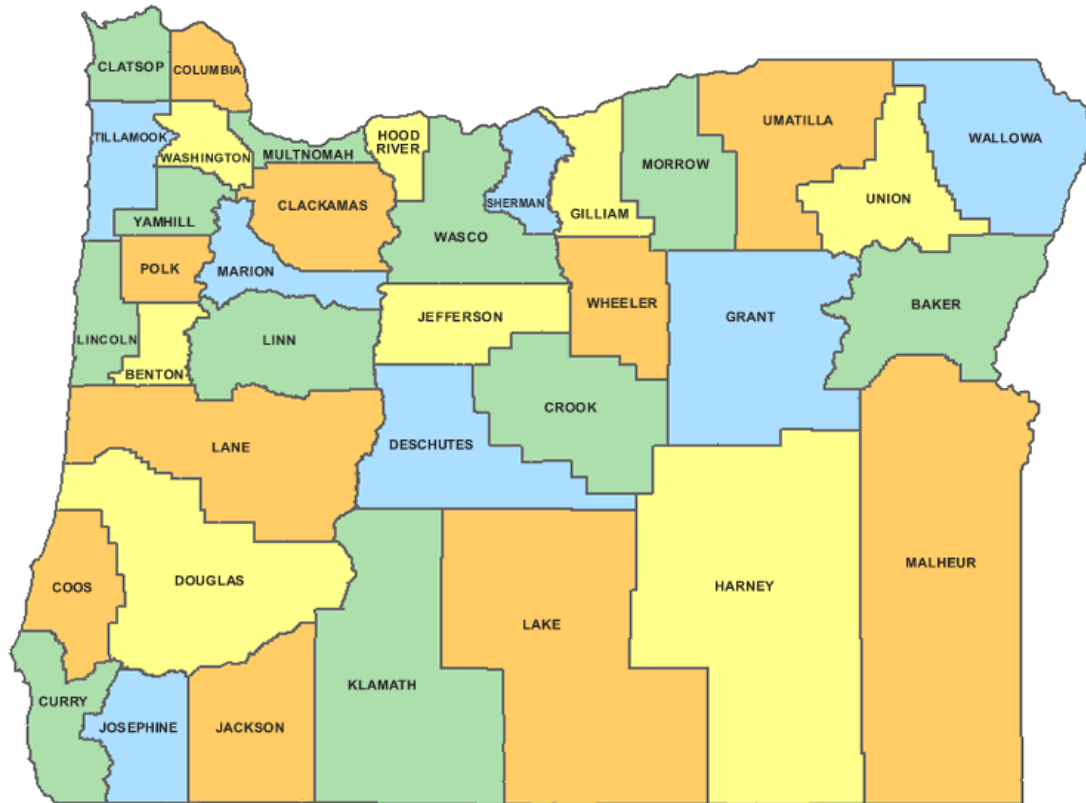
## RESOURCE NETWORK

**Supporting Quality Early Learning**  
Jackson and Josephine Counties

Mary Wolf, CCRN Manager  
April 13, 2021

Child Care Resource Network  
A program of Southern Oregon ESD  
101 N. Grape Street  
Medford, OR 97501

# Child Care Resource and Referral Agencies (CCR&R) in Oregon



- ▶ Each CCR&R is funded primarily by the Early Learning Division (ELD).
- ▶ There are 15 CCR&R's serving the 36 counties in Oregon.
- ▶ Each CCR&R has a designated service delivery area (SDA). CCRN is Jackson and Josephine Counties.
- ▶ CCR&R's are housed in different entities - Community Actions, community colleges & education service districts (ESD).

# What We Do

- CCR&Rs are the local experts in connecting early educators to a comprehensive range of community resources and educational opportunities.
- Child Care Resource Network offers a variety of professional development supports & technical assistance to all early educators in Jackson and Josephine Counties, those just starting out to those with years or experience and education.
- All early learning programs are supported:
  - License exempt relative provider
  - Licensed family child care provider
  - Certified child care center
  - Head Start and Preschool Promise programs
  - Other early care and learning programs



# Role of Child Care Resource Network

- In our region, support is offered in **English** and **Spanish**.
- CCNN assists providers to strengthen and maintain quality through Spark, Preschool Promise, Focused Child Care Networks, Infant Toddler Networks, and RCC cohorts.
- CCRN also supports our early learning community through the Inclusive Support Line (formerly Warm Line) services
- CCRN partners with SOELS and other community organizations on issues related to availability of child care, affordability, quality, and compensation and qualifications of the work force, which have broader societal impact.





## Services to the community

- Act as strong voice advocating for children, families, and early learning professionals.
- Provide data on child care needs and gaps to help determine where resources would be most effective.
- Work with state and local agencies to support and strengthen the early childhood system in Oregon.
- Member of a national organization focused on quality early care and learning.

- Support early learning programs to participate in Spark, Oregon's Quality Rating and Improvement System, to help strengthen and maintain quality



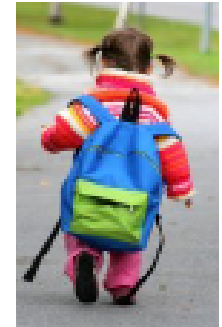
## Services to early learning and development programs

- Opportunity to attend trainings, workshops, and college classes, many offered at no cost.
- Assist programs to participate in Spark, Oregon's Quality Rating and Improvement System, and achieve a Star designation.
- Guidance on applying for scholarships, creating a professional development plan, and moving up the Oregon Registry Steps.
- Training, consultation, and on-site coaching to support quality, inclusive programs.
- Assist programs to meet requirements to become licensed or to receive a higher child care subsidy payment rate.
- Information on navigating Oregon's early childhood system, regulated by the Office of Child Care and Department of Human Services.
- Resources and guidance on operating a child care business in a professional manner.
- Support and training for providers offering exempt or informal child care.

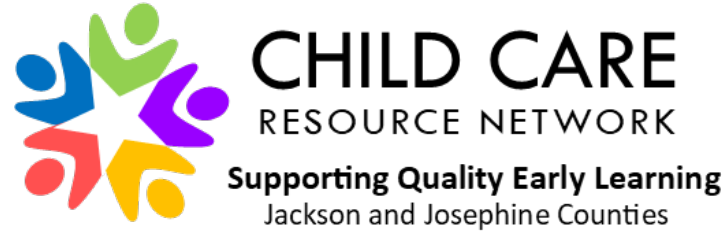


## Services to families

- Work with early childhood programs to achieve and maintain quality and build strong partnerships with families.
- Support positive transitions to kindergarten through collaboration with parents, early childhood programs, and elementary schools.
- Help families navigate the Department of Human Services child care subsidy system.
- Assist families to find services for children with special needs and help them connect to 211info for child care referrals, information on child development, and other community resources.



# CCRN Newsletter, Training Calendar, Updates



Email [CCRN@soesd.k12.or.us](mailto:CCRN@soesd.k12.or.us) to be added to our distribution list.

[CCRN Newsletter and Training Calendar](#)

---

# Pre-COVID-19 Child Care Landscape in Jackson and Josephine Counties

- Jackson and Josephine Counties are in a child care desert for children age five and under.
- A child care desert is defined as a County with more than 3 young children for every child care slot.
  - Oregon's Child Care Deserts (map page 12)
  - Interactive child care map of Oregon



Across Oregon, there is inadequate regulated child care supply - especially for infants & toddlers



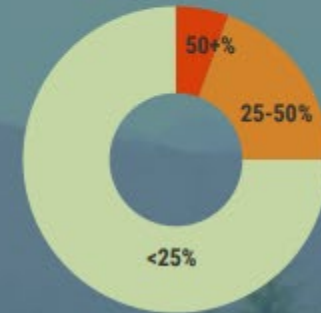
There are 8 infants & toddlers for a single child care slot in Oregon

A child care desert is a community with 3 or more children for a single child care slot



All 36 Oregon counties are child care deserts for infants & toddlers

Public funding plays a major role in creating Oregon's child care supply - especially for preschoolers



3/4 of Oregon counties have fewer than 25% publicly funded regulated infant/toddler slots

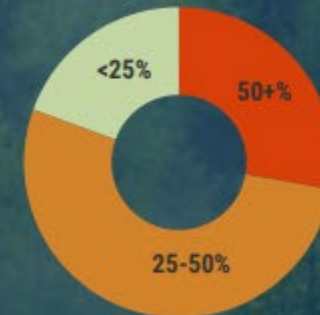


There are 3 preschool-age children for a single child care slot in Oregon



All but 9 Oregon counties are child care deserts for preschool-age children

Without publicly funded slots, 7 additional counties would be child care deserts.



All but 9 Oregon counties have at least 25% publicly funded regulated preschool-age slots



# Child Care Landscape during COVID-19

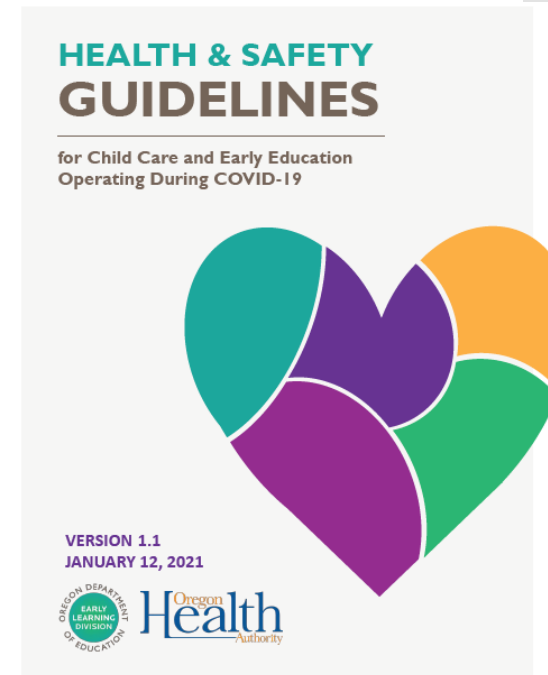
- On March 23<sup>rd</sup>, Governor Brown's Executive Order 20-12 "Stay Home, Save Live's" required all child care facilities to close unless they received approval to operate as Emergency Child Care (ECC) program.
- To be approved as an ECC, facilities were required to provide stable groups of children and prioritize child care needs of essential personnel.

<https://oregonearlylearning.com/COVID-19-Resources/For-Providers>

# Emergency Child Care

- In addition, programs needed to follow specific health and safety guidelines around sanitation, health checks, mask wearing, and teachers moving among groups.
- A significant number of programs could not comply due to
  - loss of staff
  - lack of space
  - loss of clients
  - lack of PPE and sanitation supplies

For a time, we lost almost half the supply as providers scrambled to meet the new COVID Health and Safety Guidelines and get approved as an Emergency Child Care (ECC) program.



# CCR&R Priority Tasks during COVID-19

CCRN staff was required to work remotely while continued to support providers by:

- Restructuring all trainings and professional development support to online only
- Recruiting and assisting child care programs to apply to be an Emergency Child Care (ECC) facility
- Updating ECC child care program openings in statewide 211 database, so parents would have accurate information
- Connecting and supporting providers to access the COVID-19 relief grant funding opportunities



# ELD Grant Support to Emergency Child Care Programs

## Emergency Child Care Grants Funds for Jackson and Josephine Counties

	Total Grant Funds Awarded	Non-duplicate # of providers
<b>Jackson</b>		
DHS (exempt DHS listed)	\$ 62,555.60	29
RF (Registered Family)	\$ 870,048.40	79
CF (Certified Family)	\$ 830,063.80	43
OC (Certified Center)	\$ 1,608,438.00	46
RA (Temporary Unlicensed EOCF aka "pop-ups")	\$ 135,706.00	12
BG/YMCA Block Funding	\$ 505,004.00	2
Recorded PS/SA (exempt Preschool/School Age)	\$ 56,000.00	8
<b>Total</b>	<b>\$ 4,067,815.80</b>	<b>219</b>
<b>Josephine</b>		
DHS (exempt DHS listed)	\$ 14,476.50	7
RF (Registered Family)	\$ 178,733.40	18
CF (Certified Family)	\$ 179,711.00	10
OC (Certified Center)	\$ 971,574.00	28
RA (Temporary Unlicensed EOCF aka "pop-ups")	\$ 54,808.00	3
BG/YMCA Block Funding	\$ 779,281.00	2
Recorded PS/SA (exempt Preschool/School Age)	\$ 14,000.00	2
<b>Total</b>	<b>\$ 2,192,583.90</b>	<b>70</b>
<b><u>Total combined</u></b>	<b><u>\$ 6,260,399.70</u></b>	<b><u>289</u></b>

Note: These numbers include all grant phases and block grants that were issued. RA providers (Temporary Unlicensed EOCF aka "pop-ups" ) also received grant funds. Boys and Girls Clubs and YMCA's in our community received block grants to support their sites which were operating as Emergency Child Care facilities.

# Child Care Capacity Loss

## Active Providers

### Operating Under Emergency Child Care Guidelines

Providers	Jackson	Josephine	Total
CC	55	23	79
CF	43	10	53
RF	76	16	92
Exempt PS	25	11	36
Exempt SA	19	6	25
Exempt RS	9		10
<b>TOTAL</b>	<b>227</b>	<b>66</b>	<b>293</b>

## TOTAL CLOSED

### active & inactive

Providers	Jx-62 / Jo-11
CC	13
CF	7
RF	29
Exempt PS	7
Exempt SA	3
Exempt RS	14
<b>TOTAL</b>	<b>73</b>

### 52 programs closed with active license, so would be able to reopen

Providers	Jx-45 / Jo-7
CC	9
CF	6
RF	25
Exempt PS	5
Exempt SA	2
Exempt RS	5
<b>TOTAL</b>	<b>52</b>

### 21 programs closed and inactive for various reasons

Providers	Jx-17 / Jo-4
CC	4
CF	1
RF	4
Exempt PS	2
Exempt SA	1
Exempt RS	9
<b>TOTAL</b>	<b>21</b>

# Oregon Department of Human Services ERDC

- **Employment Related Daycare (ERDC) Subsidy Program**

- Income eligible working families may receive for financial help with child care costs.
- The amount depends on the family's income, size, and the child care type.

- **Temporary COVID- 19 related changes**

- Family copays have been reduced to \$0 for 12-month time period if they apply before June 30, 2021.
- The income limit has been increased for initial eligibility.







## ERDC Income Eligibility Limits

## ERDC Income Limits Have Increased

Number in ERDC group	Gross income limit
2	\$4,293.00
3	\$5,303.00
4	\$6,313.00
5	\$7,323.00
6	\$8,333.00
7	\$8,522.00
8 or above	\$9,305.00

<https://www.oregon.gov/dhs/assistance/child-care/Pages/index.aspx>



# How to Find Child Care in Oregon

Dial 211

Text keyword "Children" to 898211

Email: [children@211info.org](mailto:children@211info.org)

Representatives available:

Monday-Friday 7am-11pm

Sat-Sun 8am-8pm

<http://triwou.org/projects/fcco>

<https://childcaresafetyportal.ode.state.or.us/portal/>

# THANK YOU!



<https://ccrnso.org>

[ccrn@soesd.k12.or.us](mailto:ccrn@soesd.k12.or.us)

541-776-8590 x 1126

[Mary\\_Wolf@soesd.k12.or.us](mailto:Mary_Wolf@soesd.k12.or.us)