



Jackson Services

Presented by:

Chedric Monahan, LCSW

Assistant Program Manager

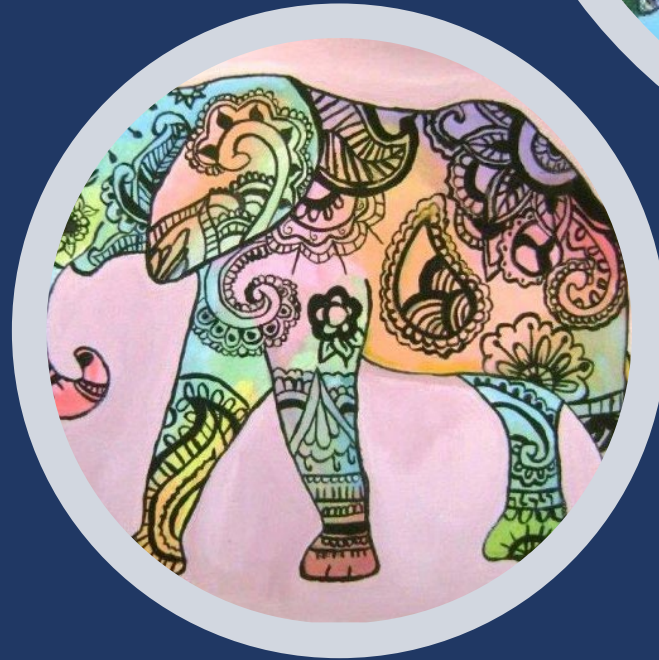
and

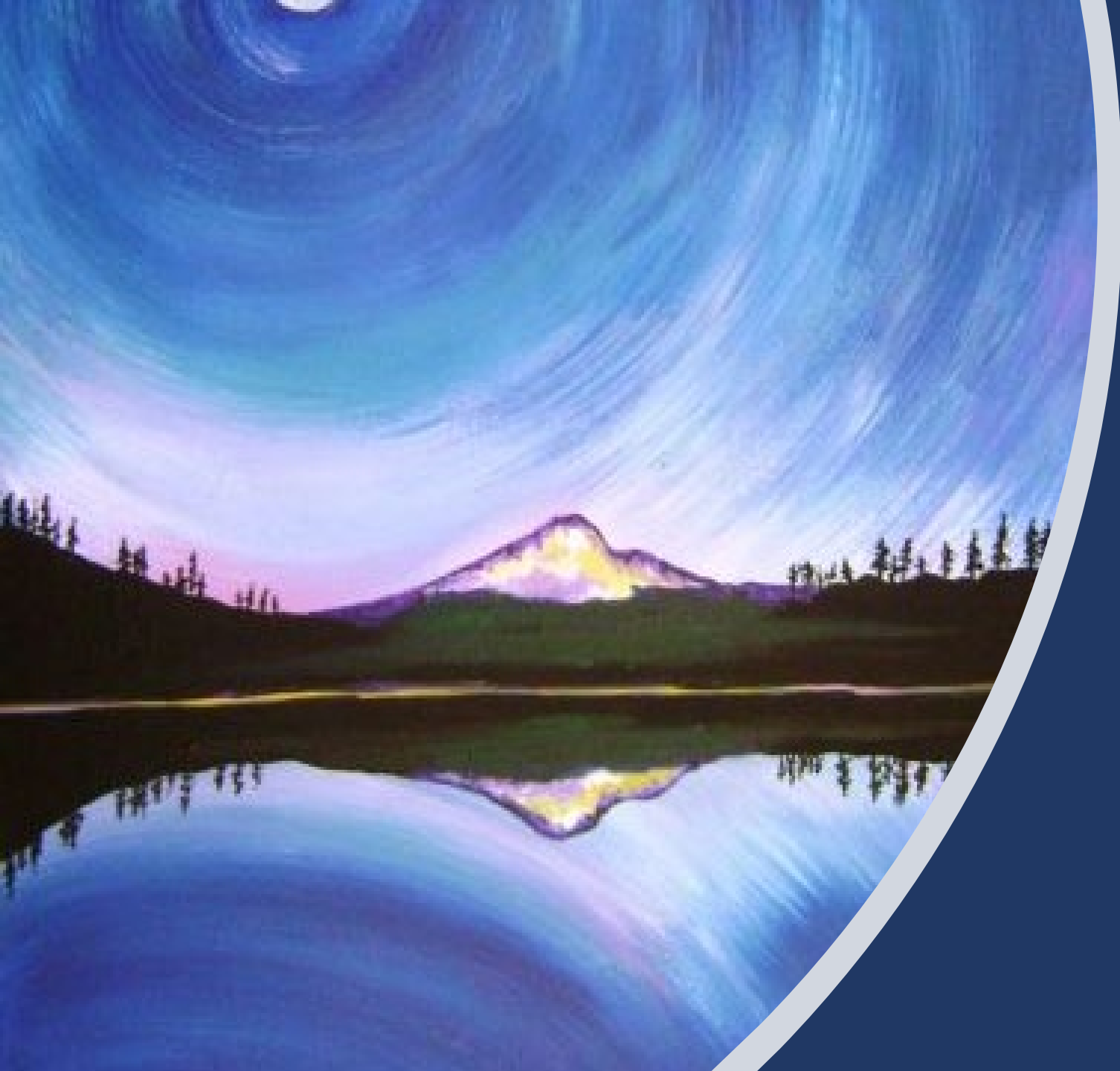
Adrienne Auxier, LPC

Program Manager

Agenda

- Current eligibility criteria
- What services we provide
- How to access our services
- How to refer a youth to Jackson Services
- Questions?





Eligibility Criteria

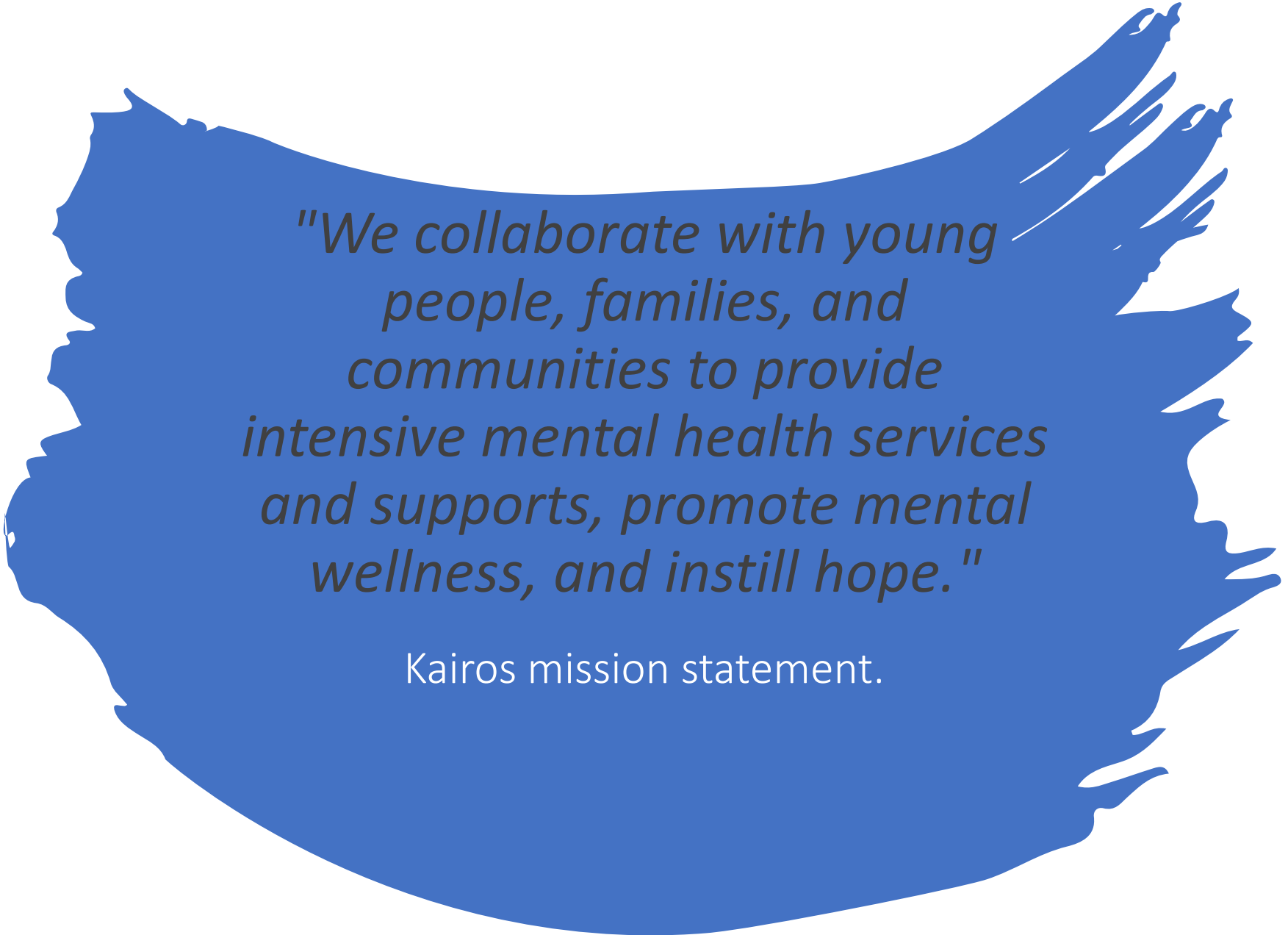


Current Eligibility Criteria

- Youth ages 0 – 24
- Active Jackson Care Connect insurance coverage
- Suspected mental and/or behavioral health concerns are present



What Services
We Provide



"We collaborate with young people, families, and communities to provide intensive mental health services and supports, promote mental wellness, and instill hope."

Kairos mission statement.

What Services We Provide

Outpatient, community-based, and crisis respite services



Individual
Counseling and
Psychotherapy



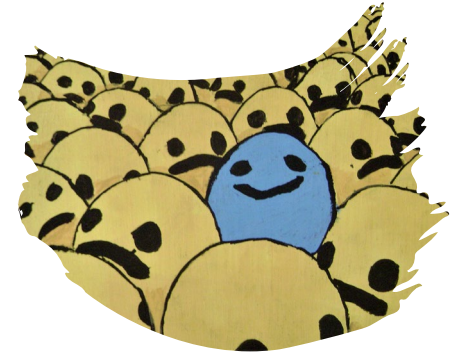
Group and Family
Psychotherapy



Skills Coaching and
Case Management



Peer Support and
Family Support



Psychiatric
Services

Kairos Clinical Model

- Foundational trauma informed approach that views resiliency and recovery as key components
- A large menu of evidence-based practices and interventions
- Interventions based on science and understanding of the brain's functions
 - Regulate
 - Relate
 - Reason
- A wide continuum of intensity of services (i.e., frequency and duration of services) agreed upon collaboratively between youth/family and care team
- Coordinated care with community partners





How to Access our Services



How to Access our Services

- Call our office at 541-772-0127
- OR
- Walk in anytime during our walk- in access hours

Jackson Services Walk-in Access Hours

Location: 1175 East Main Street, Suite 1C (Security Plaza)

Medford

Time: Tuesday and Wednesdays Noon – 3pm

Thursday and Fridays 8:30am – 3pm

What to expect:

- Intake Paperwork
 - Initial Mental Health Assessment with a Qualified Mental Health Professional
 - Collaboratively created Service Plan
 - Follow-up appointment(s) scheduled with ongoing care team (in alignment with the Service Plan that is agreed upon)
- Note: The entire admission process can take up to 2.5 hours. You are welcome to pick up intake paperwork beforehand to expedite the process. Intake paperwork and documents can also be obtained on our website: www.kairosnw.org/Jackson-services.

How to Refer a Youth to Jackson Services



How to refer a youth to Kairos Jackson Services

If you are a medical or behavioral health professional wishing to refer a youth to Jackson Services, please send referral information to

Email: KairosJacksonReferral@kairosnw.org

or

Fax: 541-772-0966

Questions?



WE CAN
IT'S POSSIBLE

A graphic on the right side of the slide features three concentric circles. The outermost circle is light blue, the middle one is white, and the innermost one is dark blue. Centered within the dark blue circle is a yellow sunburst logo. The text "WE CAN" is positioned above the sunburst, and "IT'S POSSIBLE" is positioned below it, all in a yellow, sans-serif, uppercase font.

Thank you

Chedric Monahan, LCSW
Assistant Program Manager

Adrienne Auxier, LPC
Program Manager

www.kairosnw.org

541-772-0127

