

COMMUNITY RESOURCE ORIENTATION



COMMUNITY ACTION AGENCY

- America's **Poverty Fighting** Network
- Economic Opportunity Act during the War on Poverty 1964
- **More than 1,000** CAA across the Country
- ACCESS founded in **1976**



Central
Florida Community
Action Agency, Inc.
AMERICA'S POVERTY FIGHTING NETWORK
Serving Alachua, Marion, & Levy Counties



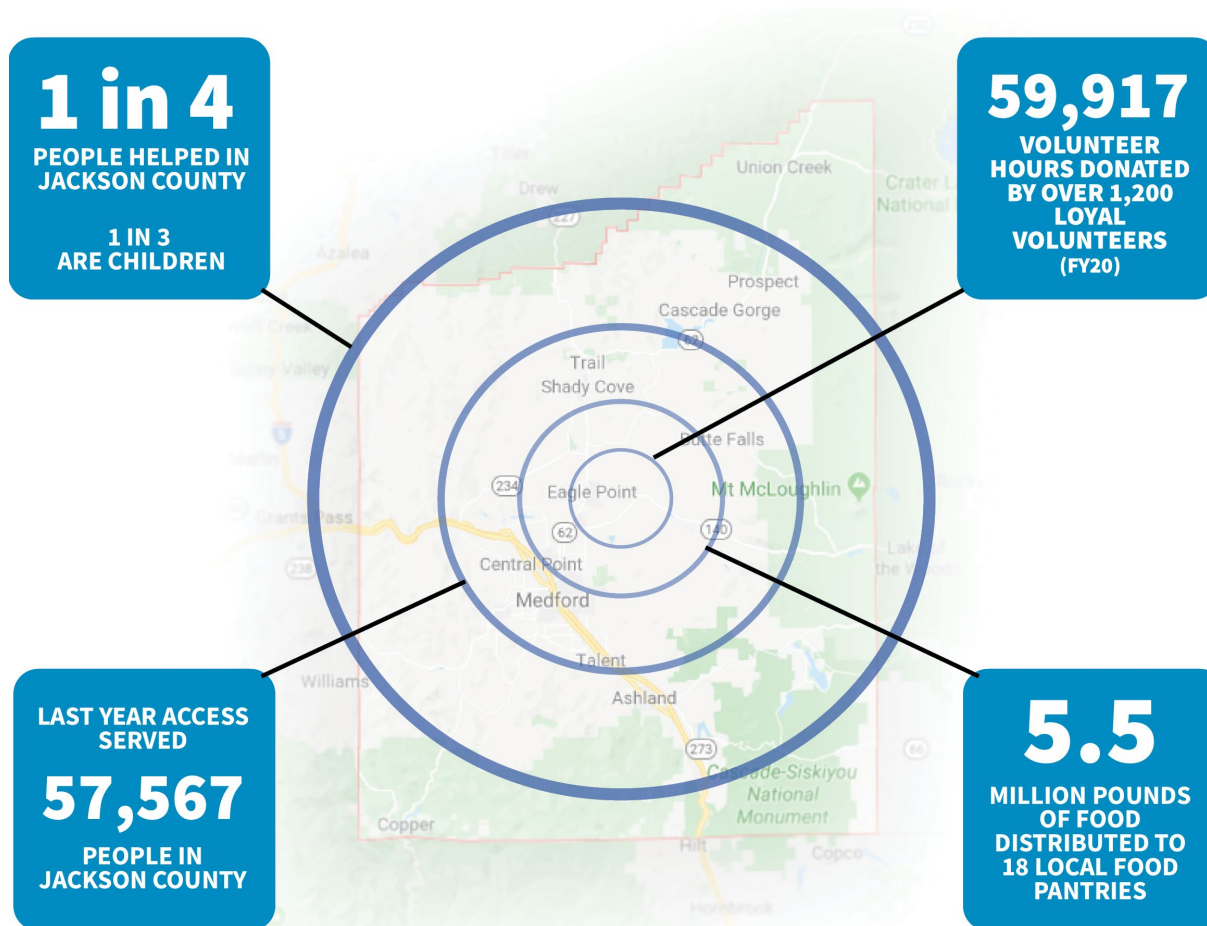


MISSION

Through partnership with a caring community, ACCESS provides immediate and long-term solutions that lead people in need toward self-sufficiency.

FOOD WARMTH SHELTER

LOCAL IMPACT



FOOD WARMTH SHELTER

FOOD PROGRAMS

- Distributed more than **5.5 million** pounds of food to **18 local food pantries**
- **40,021 neighbors** received food assistance
- More than **65,000 emergency food boxes**



Programs Include:
Mobile Food Pantry
Fresh Alliance Program
Senior Produce Bags
Community gardens

HOUSING

- **5,906 households** received energy assistance representing **12,873 people**
- **94 homes** weatherized
- Regional Homeownership Center
- Affordable rental housing
- Property management



- **Rental Assistance & Homeless Services**
 - COVID Rent Relief (OERAP)
 - Center for Community Resilience (fire survivors)
 - SSVF helped 548 Veterans & families
 - OHCS helped 1,000 families
 - Outreach & Peer Support Programs
- **Medford Severe Weather Shelter**



OTHER PROGRAMS

- Durable **Medical Equipment** Loan Program saves the community more than \$1 million per year
- Over the Top **Wig** Program





-

FOOD WARMTH SHELTER

QUESTIONS?

