

# Family Engagement Improvement Project (FEIP)

TO INCREASE ENGAGEMENT OF PREGNANT WOMEN AND FAMILIES WITH YOUNG CHILDREN INTO SERVICES AND TO KEEP THEM ENGAGED BY CREATING A SYSTEM OF WARM HANDOFF REFERRALS BETWEEN SYSTEM PARTNERS.

Deliverables under this Agreement:

- Create strategies and implementation tools to increase the connection between pregnant women and families with young children and community partners offering services to this demographic.
  - Identify the resources families need and how community partners can establish warm handoff agreements to improve contact and engagement.
1. Normalize parenting supports by creating inclusive Peer/Playgroups for all parents to attend. Build on Relationships, Trust, and Connection.
  2. Create a centralized location for community partners to host peer support, parenting education, and community meetings in Josephine County.
  3. Create marketing materials (rack cards) for health care providers to refer all parents to peer support groups & the "Community Hub."
  4. Establish The Help Me Grow program in JoCo to bridge Healthcare, Community Resources, and Young Families. Best way to secure UniteUs.

# The Core Principles For FEI Project

1. Family-Centered
2. Relationship-Based
3. Community Partnership  
Collaboration/Healthcare
4. Community Need
5. Inclusive
6. Meets Stakeholders Goals
7. Improve Family Engagement  
In Parenting Supports
8. Change the Culture of Parent  
Education
9. Create Healthier Families



# 5 Questions

## That Launch the Family Engagement Improvement Project

1

Who in JoCo is using the UniteUs Platform?

.....

Siskiyou Community Health is using UniteUs  
FB: Parents are uncomfortable with giving consent for personal data - they would rather get a text with resource info.  
GP Clinic & Women's Health Center are **not** using UniteUs

2

How do providers make referrals to community resources?

.....

Faxing a referral form or giving info to patients.

**Providers are eager for informational materials to give to families**

3

Where do moms go for help or support?

.....

Moms report they find most of their support on social media  
**Facebook**

Top Resources: Family Nurturing Center, WIC, Maslow & Health Care Providers.

4

What (how) programs are being offered during Covid times.

.....

Most home-visiting programs are done via phone, parenting classes are offered through Zoom. Entry points feel guarded due to covid restrictions.  
**Peer Support Groups have been strong throughout the pandemic.**

5

What are the gaps in JoCo to support young families.

.....

Need for an Inclusive "One Stop Shop" A Hub/Location that healthcare providers can count on to help families connect with local resources.  
**Families are feeling isolated/alone**

# 2021 UCAN Community Needs Assessment

## **Top Needs:** Family Strengthening

The region has consistently struggled with a combination of family violence indicators, whether they be incidence of child abuse, foster care use, or the need for domestic violence services. Recent ACEs data, along with the understanding of the long-term economic, health, and well-being impacts associated with ACEs, further substantiates the need to improve family well-being. Improving family and child well-being can do much to address area poverty. Healthier families not only means there is a better chance household heads stay together, it also means that children are more likely to obtain better paying work later in life.



## **Top Gap:** Lack of Service Integration

Many local service providers must spend most of their time focusing on keeping their own services flowing without adequate resources or staffing. This leaves little time for providers to work together to find ways to best bundle their services. Many providers also are also not familiar with the culture of other service providers, hindering service integration. For example, while it is well known that physical and social-environmental factors may have a profound impact on health, health providers and human and social service providers are just beginning to meet to understand how their programs together might benefit health outcomes.

## Recommendations From The Southern Oregon Family Advisory Council

1. **A living wage for essential workers**, enough to pay for adequate housing, child care costs, transportation, and basic necessities must be established and maintained if families in our region are to have the support and resources for their children to thrive.
2. It is our recommendation that priority be given to the **expansion of the number of peer counselors** at all levels.
3. We encourage the **expansion of the Connect Oregon referral system** to all schools, agencies and organizations who work with children and families.
4. We believe there is a need for **family-friendly Family Resource Centers in both Jackson and Josephine counties**, places where families can go to participate in recreational offerings, play and learn groups, socialize with each other and find access to resources through Connect Oregon in a trusted environment.

# Top Topics On Southern Oregon Mom's Group Facebook Page (not including housing & childcare)

Parenting & Relationship Advice  
Friendship / Connection



Recommendations For Health  
Care Provider



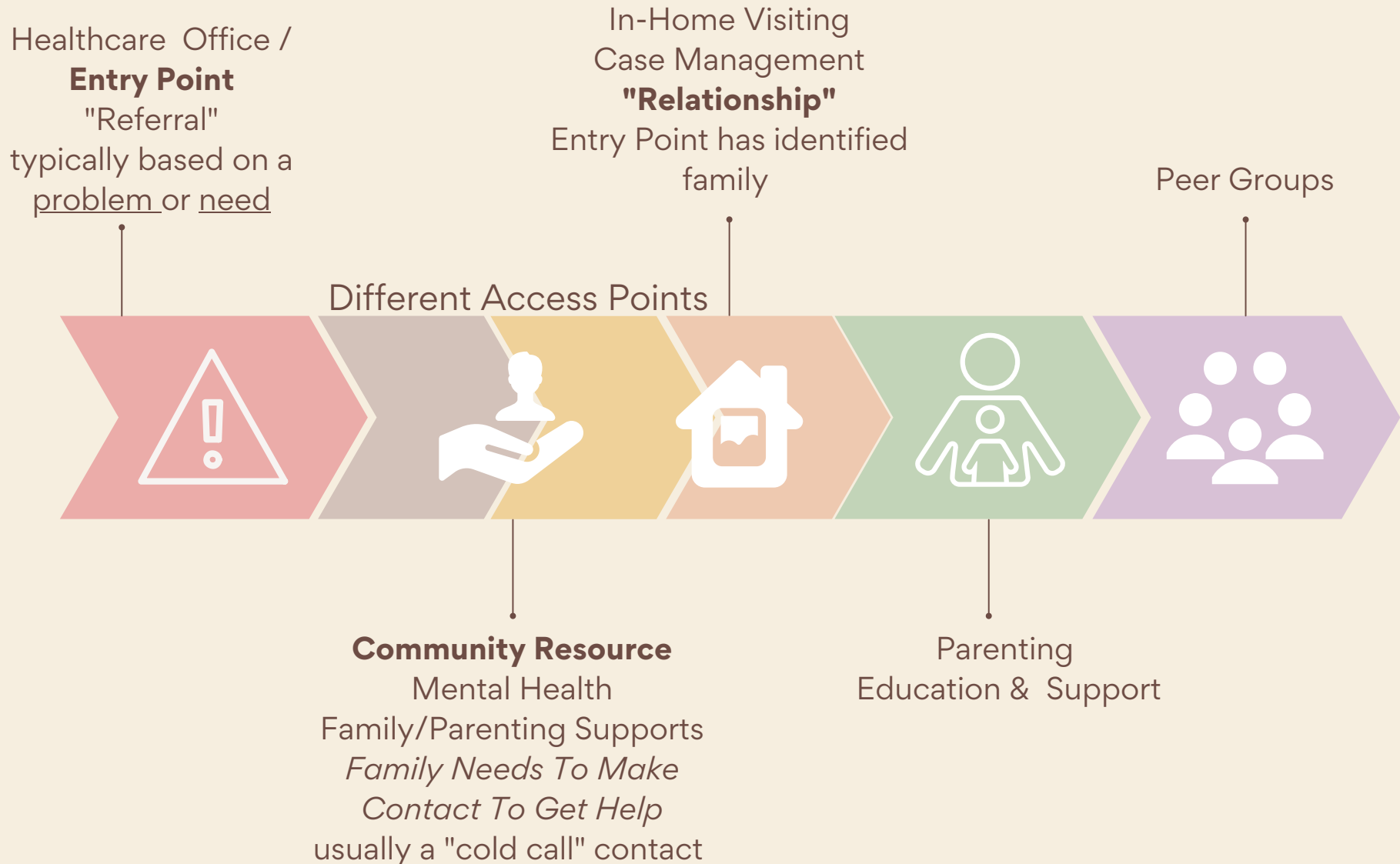
Breastfeeding Advice



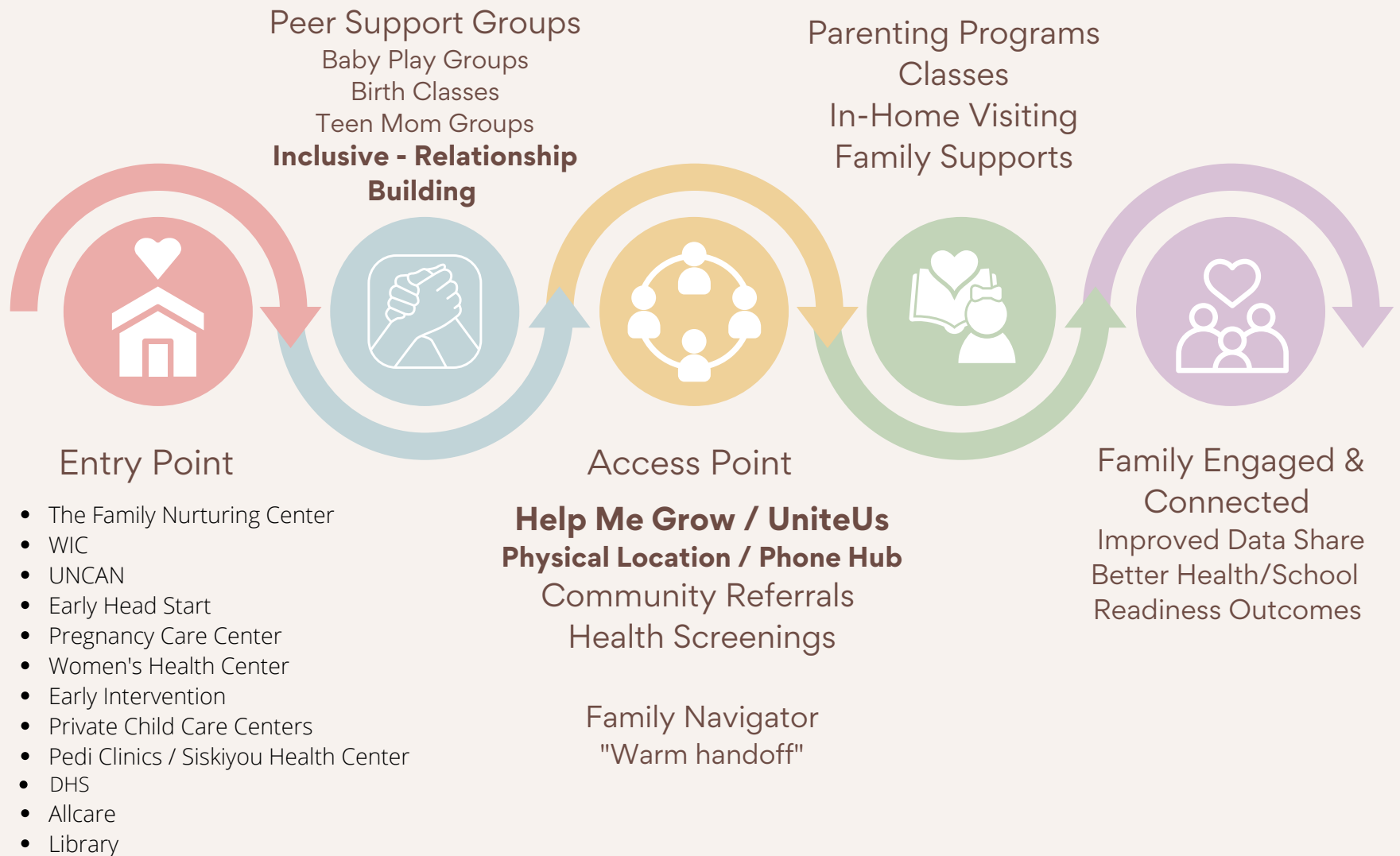
Giving and Getting  
Supplies



# Current Family Engagement/Referral System



# Family Engagement Improvement Project





# The 5 Protective Factors

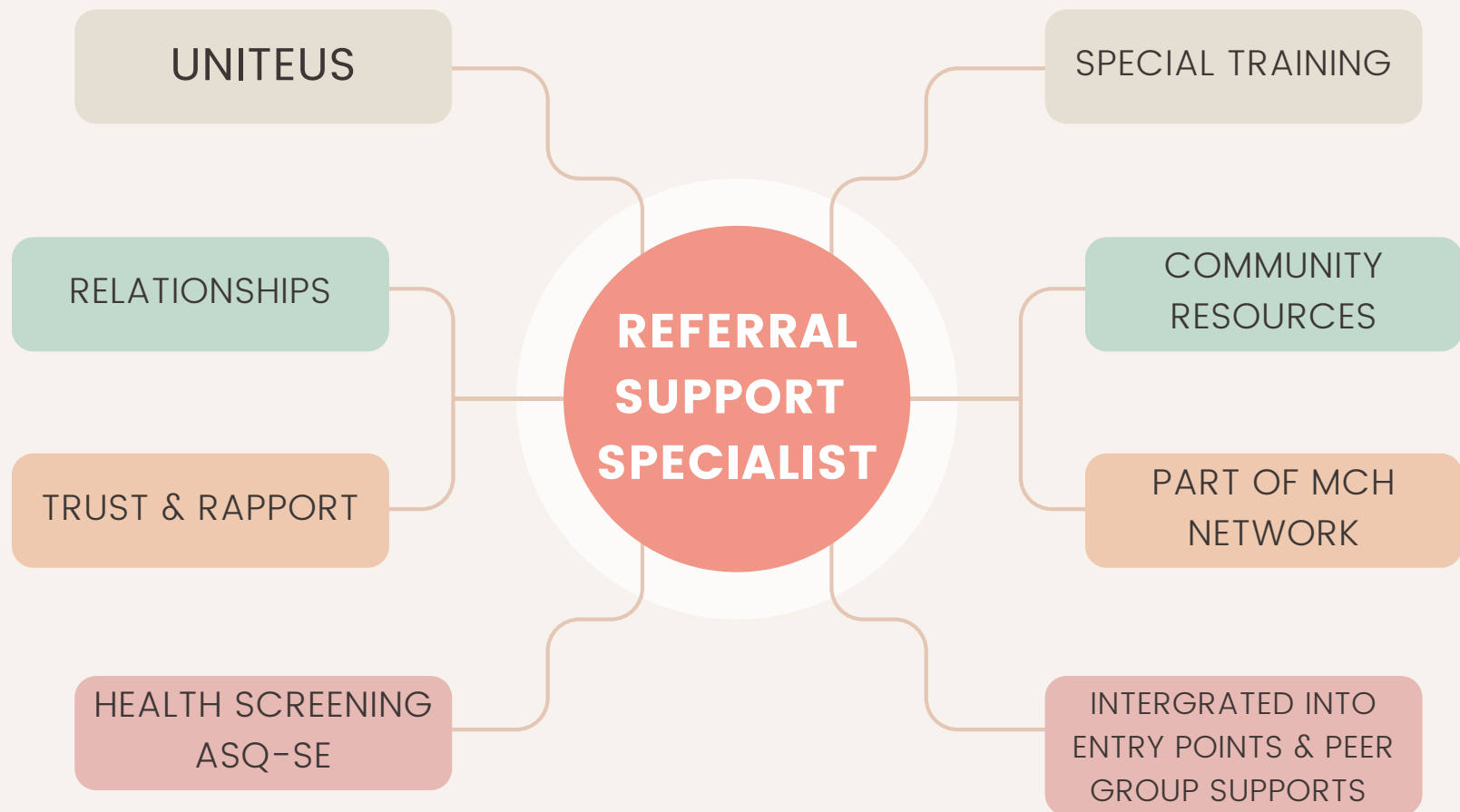
## PEER SUPPORT GROUPS



-  Nurturing & Attachment
-  Knowledge of Parenting & Child Development
-  Social Connections
-  Concrete Supports
-  Family Child Relationships

## Help Me Grow Model

The Support Specialist is the human link between Healthcare, Community Resource & Family's Needs



# Theory of Change

## LOCAL IMPLEMENTATION



If we create a centralized access point to community - based resources and supports



Then we expand care coordination capacity to connect children and families to appropriate services



If we engage child health providers in developmental screening, surveillance, and linkage through HMG



Then we support child health providers in ensuring early detection of development or behavioral concerns



If we connect families and community service providers to each other



Then we create a more seamless system of supports for young children and families



So that we advance developmental promotion, early detection, and linkage to services to support healthy development of all young children