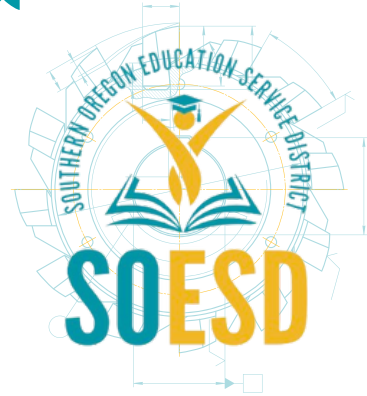


# Blueprint & Beyond

## COMPONENT DISTRICT EDITION

A regular update from the  
Superintendent's Office  
for the districts we serve.



## 1. Superintendent's Message

Sometimes strong ideas encounter circumstances that make it difficult for them to move forward as originally hoped. That has been the case with the Southern Oregon Career Center (SOCC).

Former Superintendent Scott Beveridge envisioned a regional career center that would serve as a hub for workplace preparation in Southern Oregon, similar to the Willamette Career Academy operated by WESD. In partnership with our component district superintendents, Scott committed two years of "seed money" to explore whether such a program could be successfully launched here.

Initially, several districts expressed interest in sending students to one of three proposed programs. However, uncertainty at the federal level and unexpected budget pressures at the state level led some districts to reconsider their participation. Despite these challenges, School Improvement Coordinator Brad Capener, who also served as the SOCC principal, worked diligently to secure business and industry partners. Many of these partners generously donated space, equipment, or other resources to support the program.

This year, ten students enrolled in the Medical Assisting program, where Amy Kesterson provided strong instruction and support. All participating students will complete the program with a Phlebotomy certificate, positioning them to enter the workforce immediately after graduation. While this represents a meaningful success for those students, we have not been able to secure sufficient enrollment to sustain the program long term.

As a result, SOCC will complete the 2025–26 school year and then sunset at the end of the year. I want to extend my sincere thanks to Brad, Amy, and the many others who contributed their time, expertise, and energy in an effort to bring Scott's vision to life. While the program will not continue, the students who participated this year gained valuable skills and experiences, and we are grateful for the opportunity to have supported their learning.

Sincerely,  
Mark

*Mark Angle-Hobson*  
ED.D.

Letter from Brad Capener,  
SOCC Principal & School  
Improvement Coordinator

## This Edition's Topics!

- 1.....Superintendent's Message
- 2.....Save the Date: District Office Grand Opening
- 3.....Strategic Planning Update: Engagement & What's Next
- 4.....Regional Job-Alike Groups Convened by SOESD
- 5.....Local Service Plan Process & Draft
- 6.....Division 22 Workshop for School Administrators



# 2. Save the Date: *SOESD District Office Grand Opening!*

You're invited to the

## **SOESD** *District Office* **GRAND OPENING**

Ceremony + Ribbon Cutting

**Tuesday, April 14, 2026 | 4 – 6pm**

5465 S. Pacific Hwy.  
Phoenix, OR 97535



# SOESD

Southern Oregon Education Service District





# 3. Strategic Planning Update:

## *Engagement & What's Next*

### Strategic Planning Engagement



# 193

People Participated In The  
Focus Groups + Survey!

*Thank  
you!*

*We appreciate everyone who participated in the first and second round of focus groups and took the time to complete the survey*

### What's New?

#### First Draft of Pillars:



1. Educational Equity & Student Support Systems
2. People, Culture & Organizational Belonging
3. Operational Excellence, Systems & Stewardship
4. Regional Partnerships, Engagement & Impact
5. Innovation, Learning & Future-Ready Practices

Click [here](#) to view the first draft

### What's Next?

#### Validation Survey!

**This Validation Survey is open January 30 through February 9.**

The purpose of this survey is to ensure each pillar is aligned with the goals that best serve our districts.

# 4. Regional Job-Alike Groups:

*Convened by SOESD*



Check out this list of regular regional meetings convened by SOESD leadership. These job-alike groups bring staff together to enhance educational opportunities, foster collaboration, and strengthen collective efficacy for staff and students across the region.

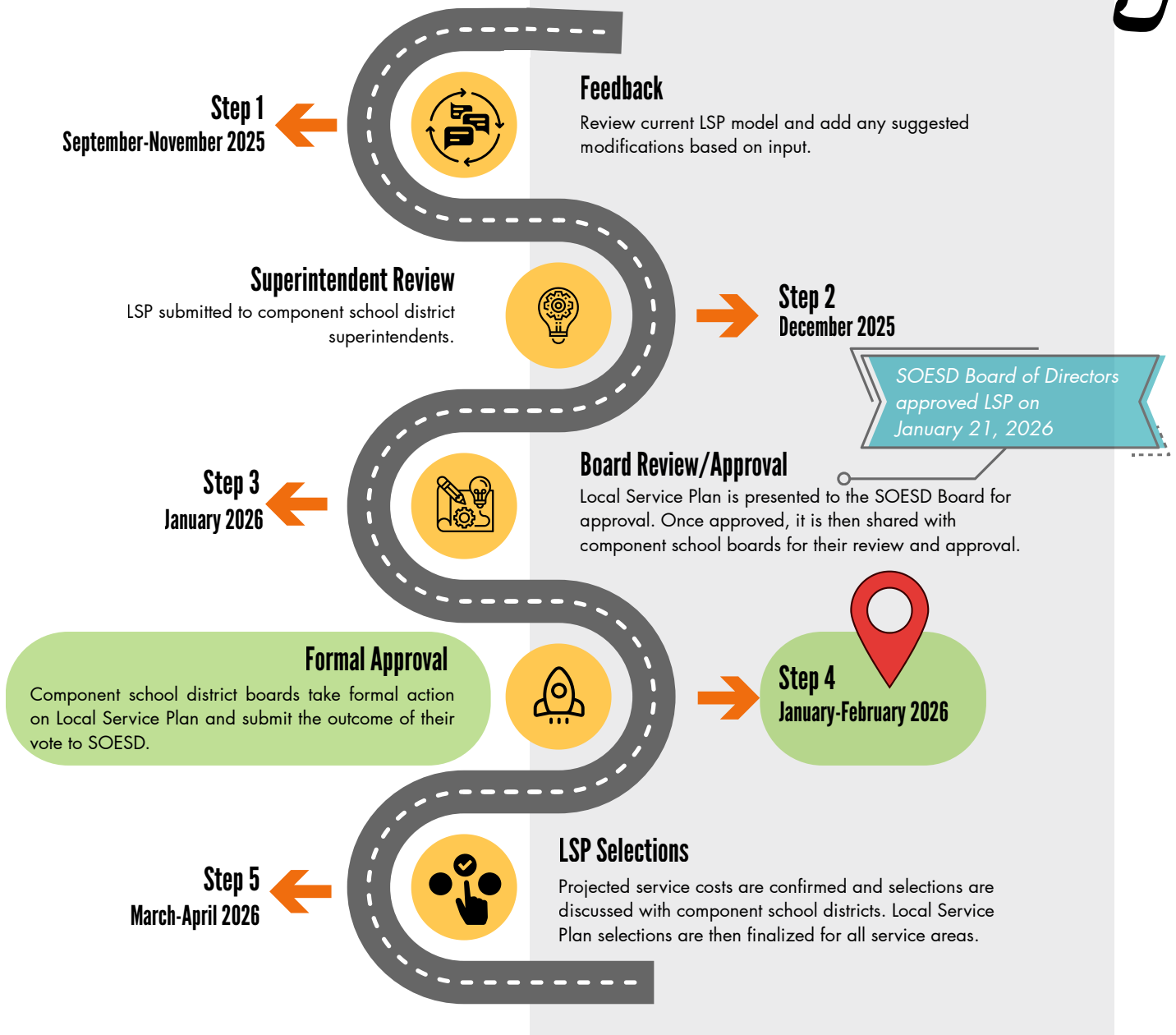
Please reach out if you're interested in learning more or joining any of the groups below.

## Regional Job-Alike Groups

- **Superintendents Meeting:** Dr. Mark Angle-Hobson, Superintendent
- **Curriculum Directors Meeting:** Kylee Harrison, Assistant Superintendent
- **Special Education Directors Meeting:** Kylee Harrison, Assistant Superintendent
- **Business Managers Meeting:** Jeanetta Woodside, Chief Financial Officer
- **Human Resources Meeting:** Ryan Swearingen, Chief Human Resources Officer
- **Technology Director Meetings:** Tom Bigboy, Chief Information Officer
- **Communications Managers Meeting:** Erin Green, Communications and Partnerships Coordinator
- **Focal Student Groups Regional Meeting:** Andrea Townsend, Focal Student Groups Coordinator & Lise Prusko, Focal Student Groups Program Manager



# 5. Local Service Plan: *Process & Draft*



CLICK  
HERE

Digital  
LSP Draft

Storybook  
LSP Draft



# 6. Division 22 Workshop

## *For School Administrators*

### WORKSHOP FOR SCHOOL ADMINISTRATORS

## WRITING COMPREHENSIVE SUBSTANCE USE PREVENTION AND INTERVENTION PLANS

Join us for a half day in-person workshop

**February 18, 2026**  
8:00am- 12:00pm PST

**Southern Oregon ESD**  
101 N Grape St,  
Medford, OR 97501

[REGISTER FOR THE WORKSHOP HERE](#)

### DEVELOPING SUBSTANCE USE PREVENTION PLANS HALF-DAY

- Deepen your understanding of Division 22 Standard requirements for comprehensive substance use prevention and intervention programs, including non-compliance pitfalls to avoid.
- Develop, review, or update your district's Comprehensive Substance Use Prevention and Intervention Plans (OAR 581-022-2045) with support from state and regional experts.
- Discover opportunities for community collaboration and partnership to support plan implementation.
- Identify strategies to align substance use prevention efforts with other state-required plans, such as Suicide Prevention, Human Sexuality, and Health Services plans.